

ROSEHAVEN

fresh
OUR Passion YOUR Home

SPRING 2021



Vincent
CONDOMINIUMS

A NEW ENERGY.
A NEW SUBWAY.
A NEW DESTINATION.

**THE VINCENT IS CHANGING THE
VAUGHAN METROPOLITAN CENTRE!**

The Vincent is a new hotel-inspired condo community set to tower over the energy of the Vaughan Metropolitan Centre. It's located just moments from the city's major transit hubs, the VMC subway station, as well as lush green spaces including the future Edgeley pond & park, boutique and big box retailers, and some of the best restaurants in the Greater Toronto Area. The Vincent will have two 27- and 37-storey towers and more than 750 plush suites, with studio, one-bedroom, one-bedroom plus den, and two-bedroom layouts.

Access the building through an elegantly appointed lobby with contemporary accents. Enjoy a fully equipped fitness centre and yoga studio, a spectacular outdoor 60' lap pool and rooftop terrace, a sports simulator, private party rooms, and state-of-the-art co-working space. There's even a designated pet spa for all your furry friends.

The Vincent is the height of hotel living without the checkout. Striking architectural design set amid premier dining and retail experiences in the heart of Vaughan. Stylishly sophisticated. Thoughtfully comforting. The Vincent is distinctly, and distinctively, yours.

COMING SOON TO VAUGHAN • REGISTER AT THEVINCENT.CA



Please make sure to follow Rosehaven and The WeLoveYouConnieFoundation on Facebook and Instagram.



VISIT OUR WEBSITE TO LEARN MORE ABOUT OUR UPDATED POLICIES/PROCEDURES IN ORDER TO MAINTAIN THE HEALTH AND SAFETY OF OUR STAFF, HOMEOWNERS, AND THE COMMUNITIES IN WHICH WE BUILD.

ROSEHAVENHOMES.COM

coming soon

THE NEIGHBOURHOODS OF MOUNT PLEASANT

At The Neighbourhoods of Mount Pleasant in Brampton, everything you need is within walking distance of your new home. Shopping, parks, financial institutions, schools, transit, sports and a recreation centre are all just steps away.

Situated within an established community and surrounded by a vast natural environment, the Neighbourhoods of Mount Pleasant offers numerous woodland trails, acres of parkland, natural wetlands and an abundance of wildlife. There are beautiful parks right in the community and a Sports Complex offering cricket pitches, baseball, soccer and more - ready for the games to begin! You can enjoy a family picnic just steps away, toss a Frisbee with the dog or just chill out with the kids at the playground. You'll love the great outdoors right outside your door!

Transit is also right at your doorstep at The Neighbourhoods of Mount Pleasant. ZUM provides fast and efficient service while the Mount Pleasant GO station just minutes away, can have you in downtown Toronto in as little as 45 minutes. Commuting is a breeze with easy access to all the major highways 407, 410 and the 401. **REGISTER NOW**



**NEXT PHASE
COMING MAY 2021**

CONSTRUCTION WELL UNDERWAY

OUR *Passion* YOUR *Home*

OUR PASSION IS REACHING NEW HEIGHTS WITH
MORE SUCCESSFULLY SOLD OUT CONDOMINIUMS!

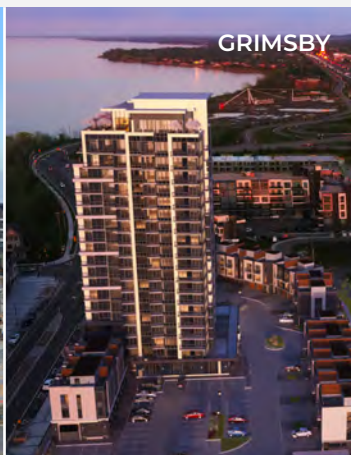
Odyssey

KiWi
CONDOS ON KING WILLIAM

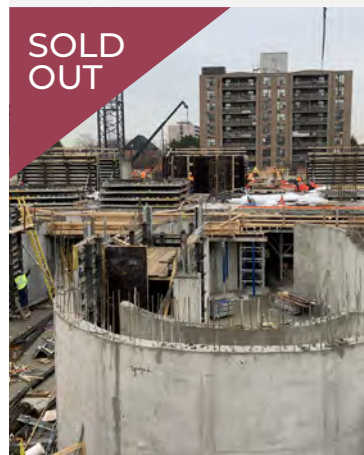
**SOLD
OUT**



GRIMSBY



**SOLD
OUT**



HAMILTON



upcoming communities

BRADFORD



Since 2009, Rosehaven has built beautiful new homes in Bradford and made dreams come true at Dreamfields. Now, we're proud to offer our next phase of detached homes in a community surrounded by nature. Located on the Holland River, Bradford is filled with vibrant scenery and convenient amenities, offering peace and tranquility along with everything you need at your fingertips, including plenty of new shops, restaurants and much more. Commuting to Dreamfields is a breeze, with the GO Train and Highway 400 both only 5 minutes away.

OAKVILLE



Ivy Rouge is Oakville's best new family destination, featuring a collection of townhomes and singles in North Oakville. Located less than 10 minutes from Oakville Trafalgar Memorial Hospital, and a conveniently short drive from Highways 403, 407 and the QEW.

STONEY CREEK



Located in one of the most desirable settings on the Niagara Escarpment, Rosehaven is offering a selection of townhomes, semi-detached and single-detached homes that are near everything you will need and want.

BRAMPTON



Rosehaven's award winning Urban Towndominiums are coming back to the master planned community of The Neighbourhoods Mount Pleasant with a new release backing onto greenspace. Located at Sandalwood Parkway and Mississauga Road, Phase 3 will offer the best of both worlds: a place where you can indulge in a relaxed condominium lifestyle with a chic, modern and stylish urban townhome setting.

HOLLAND LANDING



Located at Doane Road and 2nd Concession in Holland Landing, Anchor Woods exudes the charm of the country while being a perfect distance from the city. A tranquil spot surrounded by woods and a conservation area, connecting residents to nature while nearby highways and GO stations connect to the energy of the urban core. Anchor Woods is the ideal place to raise a family, a place where nothing is too far away, yet it's far and away the best the area has to offer.

REGISTER TO STAY UP TO DATE
ON OUR UPCOMING COMMUNITIES AT
[ROSEHAVENHOMES.COM](https://rosehavenhomes.com)



The Platinum Collection is just as exquisite and unique as the architecture itself. Rosehaven seeks out the most desirable locations to make sure that the timeless elegance that is encapsulated in the architectural design is complimented by its surroundings and amenities.

The Randall
RESIDENCES
by Rosehaven Homes



Imagine a rare and radiant address that will reward your accomplishments and reconnect you with what is truly important to you. This is The Randall. The essence of Oakville, redefined. A superbly convenient location near Lakeshore and Trafalgar puts a world of indulgent pursuits within easy reach.

**FEW REMAINING • UP TO 2,768 SQ.FT.
STARTING FROM \$2.45 MILLION***
THERANDALLRESIDENCES.COM

La Réserve
RESIDENCES IN OLDE OAKVILLE



A limited collection of only six executive freehold towns, from 2,955 sq.ft. + 658 sq. ft. upper floor terraces. A short stroll to the Lake. Unparalleled finishes. Refined design. Private elevators. And one of the last-ever rooftop terraces in South East Oakville.

**ONLY 1 REMAINS! 2,955 SQ.FT. + 658 SQ.FT. TERRACES
STARTING FROM \$2.8 MILLION***
LARESERVERESIDENCES.COM



**OVER \$3.65 MILLION GIVEN TO LEADING
HOSPITALS FOR IMPROVED CARE,
MOST PROMISING RESEARCH, AND
THE FUTURE CURE OF DIPG.**

OUR HOMEOWNERS MAKE A DIFFERENCE IN DIPG RESEARCH

For every survey completed by our homeowners, a \$25 donation is made to the We Love You Connie Foundation in support of research into DIPG pediatric brain cancer. Thank you to those who took the time to complete our survey



Ask a Sales Representative or visit our website for information about our Loyalty and Referral Programs.

Prices quoted are in \$ thousands. Prices and info correct at press time. Specifications subject to change without notice. All illustrations are artist's concept. E.&O.E.
Donations to the We Love You Connie Foundation will be reviewed year by year.