

# ROSEHAVEN

*fresh*  
OUR Passion YOUR Home

SUMMER/FALL 2021



Vincent  
CONDOMINIUMS

A NEW ENERGY. A NEW SUBWAY.  
A NEW DESTINATION.

THE VINCENT IS CHANGING THE  
VAUGHAN METROPOLITAN CENTRE!

APPOINTMENTS NOW AVAILABLE - VISIT [THEVINCENT.CA](http://THEVINCENT.CA)



Please make sure to follow Rosehaven and  
The WeLoveYouConnieFoundation on  
Facebook and Instagram.



LEARN MORE ABOUT OUR CURRENT AND  
UPCOMING COMMUNITIES BY VISITING

[ROSEHAVENHOMES.COM](http://ROSEHAVENHOMES.COM)



# Vincent

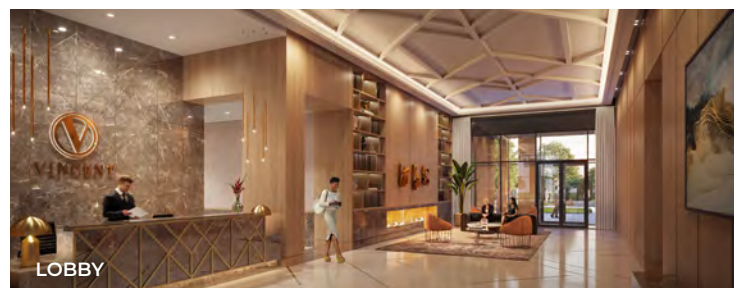
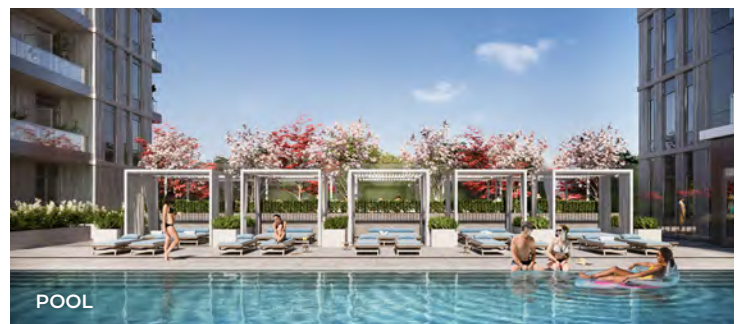
CONDOMINIUMS



The Vincent is a new hotel-inspired condo community set to tower over the energy of the Vaughan Metropolitan Centre. It's located just moments from the city's major transit hubs, the VMC subway station, as well as lush green spaces including the future Edgeley pond & park, boutique and big box retailers, and some of the best restaurants in the Greater Toronto Area. The Vincent will have two 27- and 37-storey towers and 766 suites, with studio, one-bedroom, one-bedroom plus den, and two-bedroom layouts.

Access the building through an elegantly appointed lobby with contemporary accents. Enjoy a fully equipped fitness centre and yoga studio, a spectacular outdoor 60' lap pool and rooftop terrace, a sports simulator, private party rooms, and state-of-the-art co-working space. There's even a designated pet spa for all your furry friends.

The Vincent is the height of hotel living without the checkout. Striking architectural design set amid premier dining and retail experiences in the heart of Vaughan. Stylishly sophisticated. Thoughtfully comforting. The Vincent is distinctly, and distinctively, yours.







**Rosehaven's Award Winning Urban Towndominiums Are Coming Back For The Third Time To The Master-Planned Community Of The Neighbourhoods Of Mount Pleasant!**

Located at Wanless Drive and Mississauga Road, Phase 3 will offer the best of both worlds: a place where you can indulge in a relaxed condominium lifestyle with a chic, modern and stylish urban townhome setting.

Situated just minutes from the Mount Pleasant GO Station, Züm and Brampton transit at your doorstep, as well as major retailers, restaurants, and parks that Brampton is known for, this collection of Phase 3 won't last long!

**TWO & THREE BEDROOM SUITES  
900 SQ.FT. TO OVER 1,200 SQ.FT.**

**COMING THIS FALL.  
REGISTER AT [ROSEHAVENURBAN.COM](http://ROSEHAVENURBAN.COM)**



## CONSTRUCTION WELL UNDERWAY

OUR *Passion* YOUR *Home*

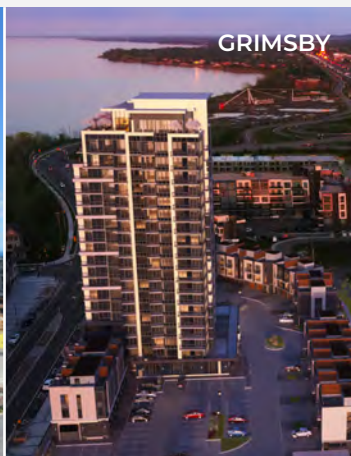
OUR PASSION IS REACHING NEW HEIGHTS WITH  
MORE SUCCESSFULLY SOLD OUT CONDOMINIUMS!

*Odyssey*

**SOLD  
OUT**



**GRIMSBY**



**KiWi**  
CONDOS ON KING WILLIAM

**SOLD  
OUT**



**HAMILTON**





The Platinum Collection is just as exquisite and unique as the architecture itself. Rosehaven seeks out the most desirable locations to make sure that the timeless elegance that is encapsulated in the architectural design is complimented by its surroundings and amenities.



*The Randall*  
RESIDENCES  
by Rosehaven Homes

Imagine a rare and radiant address that will reward your accomplishments and reconnect you with what is truly important to you. This is The Randall. The essence of Oakville, redefined. A superbly convenient location near Lakeshore and Trafalgar puts a world of indulgent pursuits within easy reach.

**SOLD OUT**

## Coming Soon to Oakville

In the remarkable setting of South East Oakville, is soon to be the home of another incredible community from Rosehaven's Platinum Collection. Sophisticated and distinguished, this captivating new infill site will be introducing an exclusive collection of luxury townhomes to a prestigious address near Lake Ontario, with many lakeside paths, parks, caf  s, boutique stores, restaurants, and the Town Square nearby. The essence of Platinum living is returning to SE Oakville. Coming Soon by Rosehaven Homes, Platinum Collection.

**REGISTER AT [ROSEHAVENPLATINUM.COM](http://ROSEHAVENPLATINUM.COM) FOR UPDATES**



**OVER \$3.65 MILLION GIVEN TO LEADING HOSPITALS FOR IMPROVED CARE, MOST PROMISING RESEARCH, AND THE FUTURE CURE OF DIPG.**

### OUR HOMEOWNERS MAKE A DIFFERENCE IN DIPG RESEARCH

For every survey completed by our homeowners, a \$25 donation is made to the We Love You Connie Foundation in support of research into DIPG pediatric brain cancer. Thank you to those who took the time to complete our survey.

